

July 2019



**Matthews**  
FIRE ALARM

# Fire Fighting Equipment

Technical Manual

**RWC**





☎ 1800 777 299

✉ [sales@mattfire.com.au](mailto:sales@mattfire.com.au)

🌐 [matthewsfirealarm.com.au](http://matthewsfirealarm.com.au)

27-28 Chapman Place,  
Eagle Farm QLD 4009, Australia



Matthews Fire Alarm is a division of  
Reliance Worldwide Corporation (Aust.) Pty. Ltd.  
ABN 71 004 784 301

## Terms and Conditions

## Reliance Worldwide Corporation Matthews Fire Alarm Product Warranty

### Adaptors

Conventry Adaptor	7
Reducing Adaptor	7
Copper to Roll Groove Adaptors	7
Storz Swivel Adaptors	7
Male to Male Adaptor	7
125mm Storz Roll Groove Adaptor	8
Ship to Shore Flange	8

### Backflow

Double Check Valve	9
Reduced Pressure Zone Valve	9

### Boosters

Back Entry Booster	10
Bottom Entry Booster	10
Single Point Booster	10
Storz Single Point Booster	10

### Branchpipes

38mm BSP Thread – 25mm Top Branchpipe	11
65mm BIC PVC Branchpipe	11
65mm QRT PVC Branchpipe	11
65mm QRT Brass Branchpipe	11
65mm BIC – 40mm BSP Top Branchpipe	11

### Breechings

Controlled Independent Ball Valve	12
Controlled Dividing QRT Breeching	12
Controlled Dividing Breeching	12

### Couplings

65mm QRT Serrated Tail Coupling	13
BSP Coupling	13
40mm BIC Coupling	13
65mm BIC Coupling	13

## Hydrant Valves

BIC x 65mm BSP Male Hydrant Valve	14
SART x 80 Roll Groove with Anti-Vandal Key	14
40mm BSP Hydrant Valve	14
65mm SART Hydrant Valve	14
65mm Globe Hydrant Valve	14

## Nozzles

40mm BSP Jet Nozzle	15
Junior Fog Nozzle	15
40mm Commercial Fog Nozzle	15
FYRKYL – Multijet and Spray Nozzle	15
Plastic Diffuser Nozzle	15
Jet Nozzle	16
Jet Spray Nozzle	16

## Standpipes

Double Outlet BIC Standpipe	17
Single Outlet Standpipe	17
Contractors Standpipe	17
BS 750 x BIC Standpipe   BS 750 x Contractors Standpipe	17
65mm QRT D/O Standpipe	17
Spare Part List (Standpipe)	17

## Tools

Hydrant Valve and Chisel Point Spanner	18
Storz Folding Spanner	18
Fire Beater	18
RakHo	18
Firemans Hatchet	18
Pickhead Axe	19
Hose Washing Machine	19
Storz Static Pressure Gauge	19
Hydrant Road Key	19
Storz Spanner	19

## Miscellaneous

Outdoor Hose Reel Cover	20
Pipe Mounted Hose Cradel and Cover	20
Swinging Arm Cradle	20
Adaptor Washers	20
Jumper Valve Washers	20
Miscellaneous Washers	21
Pitot Gauge (Peizometer)	21
Hand Siren	21

## Terms and Conditions

No party should rely upon the contents of this publication as to the fitness of any particular product for any particular use or application. Goods are offered with the benefit of the manufacturers warranty but Reliance Worldwide Corporation (Aust.) Pty. Ltd. shall not be liable for any loss or damage either direct or consequential arising out of any defects.

Subject to any statutory obligation, Reliance Worldwide Corporation (Aust.) Pty. Ltd. may at its election:

1. Replace any product found by Reliance Worldwide Corporation (Aust.) Pty. Ltd. to be defective within twelve months of sale or supply equivalent product;
2. Pay the cost of replacing any such defective product; or
3. Repair any such defective product or pay the cost of repairs.

All goods are sold on Reliance Worldwide Corporation (Aust.) Pty. Ltd. General Conditions of Sale as attached and as may be modified from time to time prior to any particular sale.

Reliance Worldwide Corporation (Aust.) Pty. Ltd. reserves the right to change pricing, modify designs and specifications and to withdraw and introduce products.

© 2019 All rights reserved.

No part of this publication may be reproduced, copied or transmitted in any form by any means graphic, electronic or mechanical (including photo-copying, recording, taping or by any information storage and retrieval system) without prior permission in writing of the publisher Reliance Worldwide Corporation (Aust.) Pty. Ltd.

## Reliance Worldwide Corporation Matthews Fire Alarm Product Warranty

Subject to the warranty conditions and exclusions set out below MFA products are warranted to be free from defects in material and/or workmanship for a period of 12 months service life and if found by MFA to be so defective will be replaced as set out below. If the product is sold by a party other than MFA then it is sold by that seller as principal and the seller has no authority from MFA to give any additional warranty on behalf of MFA.

The benefits of this warranty are in addition to all other rights and remedies. Our goods come with guarantees that cannot be excluded under Australian Consumer Law. You are entitled to a replacement or refund for a major failure and for compensation for any other reasonably foreseeable loss or damage. You are also entitled to have the goods repaired or replaced if the goods fail to be of acceptable quality and the failure does not amount to a major failure.

### Warranty Conditions and Exclusions

#### Conditions:

1. The product must have been installed by a licensed plumber or suitably qualified person in accordance with the MFA Installation Instructions / Directions, and in accordance with the National Plumbing and Drainage Code AS3500 (the Code) current at the date of installation and all relevant statutory and local requirements in the State or Territory in which the product is installed.
2. Where the product is installed outside the boundaries of a metropolitan area as defined by MFA, the cost of transport insurance and travelling shall be the purchaser's responsibility.
3. Where the product comprises part of a system, installation of that system must be in accordance with its manufacturer's recommendations, the Code and all relevant statutory and local State or Territory requirements.
4. The product may be returned to the seller or alternatively mailed to RWC together with detail of the failure at your expense. Should during the warranty period shown above contain a defect as a result of manufacture RWW will replace the valve and pay for expense of shipment of the replaced valve?
5. Where the product is replaced under warranty the replacement product carries a new warranty as detailed herein.

#### Exclusions:-

Replacement work will be carried out as set out in the MFA Warranty above, but the following exclusions may cause the warranty to become void, and may incur a service charge including cost of parts where:

1. Damage has been caused by accident, Acts of God, misuse, incorrect installation, incorrect installation of the system of which the product forms a part or attempts to disassemble the product.
2. It is found that there is nothing wrong with the product.
3. The failure of the product is due in part or in whole to faulty manufacture/installation of the system of which the product forms part.
4. The product has failed directly or indirectly as a result of excessive water pressure or temperature outside the Application Guidelines, thermal input or corrosive environment.
5. The product has failed due to foreign matter either from installation or the water supply.
6. The failure of the product is due to scale formation in the waterways of the product.
7. The failure of the product is due in part, or in whole, to installation not in conformance with the requirements of the Code.
8. MFA reserves the right to change its specifications without prior notice and will not accept liability for any claim arising from such change.
9. Subject to any statutory provisions to the contrary, claims for damage to furniture, carpets, walls, foundations or any other consequential loss either directly or indirectly due to leakage from the product are also excluded from warranty cover.

Reviewed: Apr 2015 (FN416/c\*)

Reliance Worldwide Corporation may make change to this Limited Warranty statement at a review or at any other time without any notification.



FS2329

### Conventry Adaptor

<b>Inlet</b>	3 TPI
<b>Outlet</b>	BSP or Roll Groove
<b>Materials</b>	Body: Aluminium or Gunmetal Washer: Rubber
<b>Finish</b>	Natural



FS2133

### Reducing Adaptor

<b>Inlet</b>	65 M/F Threads: QRT, CFA, NSW, SA
<b>Outlet</b>	Pipe Thread Male 50mm, 40mm, 25mm, 20mm
<b>Materials</b>	Body: Aluminium or Gunmetal Washer: Neoprene
<b>Finish</b>	Natural or Polished



FS2080

### Copper to Roll Groove Adaptors

<b>Sizes</b>	50mm, 80mm, 100mm, 150mm, and 200mm
<b>Materials</b>	DR Brass
<b>Finish</b>	Natural



FS2221

### Storz Swivel Adaptors

<b>Materials</b>	Body: Aluminium
<b>Finish</b>	Natural
<b>Options</b>	Other sizes available upon request



FS2002

### Male to Male Adaptor

<b>Inlet</b>	All Threads available for all states ie, BIC QRT, NSW SART, CFA
<b>Outlet</b>	BSP Available in 40mm, 50mm, 65mm
<b>Materials</b>	Gunmetal or Aluminium
<b>Finish</b>	Natural



FS9105

### 125mm Storz Roll Groove Adaptor

<b>Inlet</b>	125 Storz
<b>Outlet</b>	100mm Roll Grooved
<b>Material</b>	Aluminium
<b>Finish</b>	Natural
<b>Options</b>	Other sizes available upon request



FS2329

### Ship to Shore Flange

<b>Inlet</b>	Ship to Shore Flange
<b>Outlet</b>	BIC, QRT, NSW, SART, and 65 BSP, Storz
<b>Materials</b>	Gunmetal
<b>Finish</b>	Natural





### Double Check Valve

<b>Size</b>	Available in 15mm up to 200mm
-------------	-------------------------------



### Reduced Pressure Zone Valve

<b>Inlet</b>	Available in 15mm up to 200mm
<b>Materials</b>	Brass



FS1024

### Back Entry Booster

<b>Inlet</b>	65mm Fire Service Connection
<b>Outlet</b>	100mm Roll Groove and 100mm BSP Male
<b>Materials</b>	Body: DR Brass
	Washer: Neoprene
<b>Finish</b>	Painted
<b>Standard</b>	Approved to AS 2419.3



FS1034

### Bottom Entry Booster

<b>Inlet</b>	65mm Fire Service Connection
<b>Outlet</b>	100mm Roll Groove
<b>Materials</b>	Body: DR Brass
	Washer: Neoprene
<b>Finish</b>	Painted
<b>Standard</b>	Approved to AS 2419.3



FS1041

### Single Point Booster

<b>Inlet</b>	65mm Fire Service Connection
<b>Outlet</b>	80mm Roll Groove
<b>Materials</b>	Body: DR Brass
	Washer: Neoprene
<b>Finish</b>	Natural
<b>Options</b>	Available with 65mm BSP



FS1043

### Storz Single Point Booster

<b>Inlet</b>	65mm Storz
<b>Outlet</b>	80mm Roll Groove
<b>Materials</b>	Body: Gunmetal
<b>Finish</b>	Natural



FS6015

### 38mm BSP Thread – 25mm Top Branchpipe

<b>Inlet</b>	40mm BSP Thread
<b>Outlet</b>	25mm BSP Thread
<b>Materials</b>	Body: Brass
<b>Finish</b>	Natural



FS6018

### 65mm BIC PVC Branchpipe

<b>Inlet</b>	65mm BIC
<b>Outlet</b>	Fixed Nozzle
<b>Materials</b>	Plastic



FS6021

### 65mm QRT PVC Branchpipe

<b>Inlet</b>	QRT, SA AND NSW
<b>Materials</b>	Plastic
<b>Note</b>	QRT Branchpipe comes with removable nozzle



FS6014

### 65mm QRT Brass Branchpipe

<b>Inlet</b>	QRT, SA, NSW, and CFA
<b>Outlet</b>	40mm BSP
<b>Materials</b>	Body: Gunmetal and Aluminium Washer: Neoprene
<b>Note</b>	CFA only available in Gunmetal



FS6000

### 65mm BIC – 40mm BSP Top Branchpipe

<b>Inlet</b>	65mm BIC
<b>Outlet</b>	40mm BSP Thread
<b>Materials</b>	Body: Gunmetal and Aluminium Washer: Neoprene



FS6037

### Controlled Independent Ball Valve

<b>Inlet</b>	65mm Storz
<b>Outlet</b>	2 x 65mm Storz
<b>Materials</b>	Body: Aluminium
<b>Finish</b>	Natural
<b>Options</b>	Other Storz variations also available
<b>Note</b>	Also available in QRT & BIC



FS6043

### Controlled Dividing QRT Breeching

<b>Inlet</b>	QRT, NSW, and SA
<b>Outlet</b>	2 x 65mm QRT, NSW, and SA
<b>Materials</b>	Body: Gunmetal
<b>Finish</b>	Painted
<b>Note</b>	Single Control – Enabling the user to close off 1 outlet



FS6041

### Controlled Dividing Breeching

<b>Inlet</b>	BIC Male
<b>Outlet</b>	2 x 65mm BIC Female
<b>Materials</b>	Body: Brass
<b>Finish</b>	Painted
<b>Note</b>	Single Control – Enabling the user to close off 1 outlet





FS5030

### 65mm QRT Serrated Tail Coupling

<b>Inlet</b>	QRT, NSW, BIC, SA
<b>Outlet</b>	Hose Tail, Serrated or Grooved
<b>Materials</b>	Body: Brass or Aluminium
<b>Finish</b>	Machined/Cast
<b>Options</b>	Also available with 40mm, 50mm, or 65mm Hose Tails



FS5111

### BSP Coupling

<b>Inlet</b>	40mm BSP
<b>Outlet</b>	40mm Hose Tail Grooved
<b>Materials</b>	Body: Brass
<b>Finish</b>	Machined/Cast



FS5066

### 40mm BIC Coupling

<b>Inlet</b>	40mm British Instantaneous
<b>Outlet</b>	40mm Hose Tail, Grooved
<b>Materials</b>	Body: Gunmetal
<b>Finish</b>	Machined/Cast



FS5075

### 65mm BIC Coupling

<b>Inlet</b>	65mm British Instantaneous
<b>Outlet</b>	40mm, 50mm, and 65mm Hose Tail, Grooved or Serrated
<b>Materials</b>	Body: Gunmetal or Aluminium
<b>Standard</b>	BS 336



FS00232

### BIC x 65mm BSP Male Hydrant Valve

<b>Inlet</b>	65mm BSP Male
<b>Outlet</b>	BIC
<b>Materials</b>	Body: DR Brass
	Washer: Neoprene
	Handwheel: Cast Iron, Painted
<b>Finish</b>	Painted
<b>Standard</b>	AS 2419.2



FS0079

### SART x 80 Roll Groove with Anti-Vandal Key

<b>Inlet</b>	80mm Roll Groove – 65 BSP Female
<b>Outlet</b>	SART
<b>Materials</b>	Body: DR Brass
	Washer: Neoprene
<b>Finish</b>	Natural
<b>Standard</b>	AS 2419.2
<b>Note</b>	Anti-Vandal key is fitted to stop unauthorised use of the valve.



FS0076

### 40mm BSP Hydrant Valve

<b>Inlet</b>	40mm BSP
<b>Outlet</b>	40mm BSP
<b>Materials</b>	Body: DR Brass
	Washer: Neoprene
	Handwheel: Gunmetal
<b>Finish</b>	Painted



FS0049

### 65mm SART Hydrant Valve

<b>Inlet</b>	80mm Roll Groove – 65 BSP Female
<b>Outlet</b>	65mm SART
<b>Materials</b>	Body: DR Brass
	Washer: Neoprene
	Handwheel: Cast Iron, Painted
<b>Finish</b>	Natural
<b>Standard</b>	AS 2419.2



FS0019

### 65mm Globe Hydrant Valve

<b>Inlet</b>	65mm BSP Male
<b>Outlet</b>	65mm QRT or 65mm NSW VT
<b>Materials</b>	Body: DR Brass
	Washer: Neoprene
	Handwheel: Gunmetal
<b>Finish</b>	Natural
<b>Standard</b>	AS 2419.2



FS6545

### 40mm BSP Jet Nozzle

<b>Inlet</b>	40mm BSP
<b>Outlet</b>	12mm, 15mm, 16mm, 20mm and 25mm
<b>Materials</b>	Gunmetal
<b>Finish</b>	Natural
<b>Options</b>	Also available in Aluminium



FS6541

### Junior Fog Nozzle

<b>Inlet</b>	20mm or 25mm BSP
<b>Materials</b>	Gunmetal
<b>Finish</b>	Natural



FS6547

### 40mm Commercial Fog Nozzle

<b>Inlet</b>	40mm BSP
<b>Materials</b>	Gunmetal
<b>Finish</b>	Natural



FS6530

### FYRKYL – Multijet and Spray Nozzle

<b>Inlet</b>	25mm BSP Female (Storz available)
<b>Materials</b>	Body: Cast iron , Aluminium, and plastic Turret: Nylon
<b>Finish</b>	Powder Coated Red



FS6563

### Plastic Diffuser Nozzle

<b>Inlet</b>	20mm, 25mm, and 40mm BSP Female
<b>Materials</b>	Body: Plastic

Size	20mm PVC Nozzle	25mm PVC Nozzle	38mm PVC Nozzle
<b>Flow Rate</b>	690kPa	690kPa	690kPa
<b>Solid Stream</b>	76 L/min	76 L/min	148 L/min
<b>45° Spray</b>	95 L/min	95 L/min	307 L/min
<b>120° Spray</b>	117 L/min	117 L/min	352 L/min



FS6039

### Jet Nozzle

<b>Inlet</b>	20mm and 25mm
<b>Outlet</b>	20mm: 6mm Orifice
	25mm: 6mm Orifice
	12mm Orifice
<b>Materials</b>	20mm and 25mm available in Gunmetal only



FS6536

### Jet Spray Nozzle

<b>Inlet</b>	20mm and 25mm Hose Tail
<b>Materials</b>	Gunmetal
<b>Finish</b>	Natural
<b>Note</b>	Twist the nozzle to change between jet, spray, and off





FS3015

### Double Outlet BIC Standpipe

<b>Inlet</b>	Spring or Screw Hydrant
<b>Outlet</b>	All types of outlets available (BIC pictured)
<b>Finish</b>	Powder Coated Red – other colours as specified



FS3027

### Single Outlet Standpipe

<b>Inlet</b>	Spring or Screw Hydrant
<b>Outlet</b>	All types of outlets available (QRT Thread pictured)
<b>Materials</b>	Gunmetal and Aluminium
<b>Finish</b>	Powder Coated Red – other colours as specified



FS3070

### Contractors Standpipe

<b>Inlet</b>	Spring Hydrant
<b>Outlet</b>	All types of outlets available in 25mm or 40mm (25mm contractors pictured)
<b>Materials</b>	Gunmetal
<b>Finish</b>	Powder Coated Red – other colours as specified
<b>Options</b>	Can have tap fitted



FS3023

### BS 750 x BIC Standpipe | BS 750 x Contractors Standpipe

<b>Inlet</b>	BS750 (65mm SART Thread)
<b>Outlet</b>	65mm BIC Female and 65mm NSW VT Male
<b>Materials</b>	Gunmetal and Aluminium
<b>Finish</b>	Polished
<b>Options</b>	Contractors Standpipe available in Gunmetal



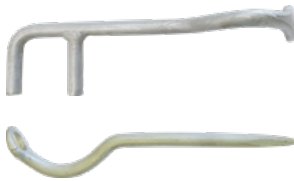
FS3016

### 65mm QRT D/O Standpipe

<b>Inlet</b>	Spring or Screw Hydrant
<b>Outlet</b>	All types of outlets available (QRT pictured)
<b>Materials</b>	Gunmetal and Aluminium
<b>Finish</b>	Powder Coated Red – other colours as specified

### Spare Part List (Standpipe)

Please download Spare Parts List at [MatthewsFireAlarm.com.au](http://MatthewsFireAlarm.com.au)



FS7039 and FS7027

### Hydrant Valve and Chisel Point Spanner

<b>Materials</b>	Steel
<b>Finish</b>	Hot Dipped Galvanised



FS7032

### Storz Folding Spanner

<b>Materials</b>	Aluminium Heat Treated
<b>Finish</b>	Natural



FS7026

### Fire Beater

<b>Materials</b>	Handle 25mm Australian Hardwood Unlined Fire Hose
------------------	---



FS7044

### RakHo

The Rakho 6 prong comes complete with an Australian hardwood timber handle. A McLeod fire fighting tool, the Rakho is favoured by fire fighters for clearing heavy duty undergrowth.

The Blade is made from special hardened steel and has a serrated edge for raking and a sharp blade for cutting, scraping and chipping. Our Rakho has a powder coated enamel finish in bright orange.

A Rakho Handle will also be required, made of a strong Australian timber hardwood, this item is durable and ideal in tough working conditions. Its standard length is 1300mm.

Our Rakho Head comes complete with a handle for clearing undergrowth etc.



FS7029

### Firemans Hatchet

<b>Standard</b>	Tested to 20,000 volts
<b>Options</b>	Leather pouch available at extra cost



FS7000

### Pickhead Axe

<b>Materials</b>	Fibreglass Handle
<b>Weight</b>	2.4kg
<b>Length</b>	900mm



FS7031

### Hose Washing Machine

<b>Inlet</b>	Can be supplied with any fitting
<b>Length</b>	300mm
<b>Width</b>	300mm
<b>Height</b>	270mm
<b>Weight</b>	10kg
<b>Note</b>	Designed for the removal of loose stones, sand etc. Features a large diameter bore of 134mm hose with couplings up to 75mm storz and normal 65mm threaded to pass through.



FS3010

### Storz Static Pressure Gauge

<b>Inlet</b>	All types of inlets available (Storz pictured)
<b>Options</b>	Available in all threads for all states



FS7045

### Hydrant Road Key

<b>Material</b>	Steel
-----------------	-------



FS7042

### Storz Spanner

<b>Materials</b>	Steel
<b>Finish</b>	Powder Coated Black



FS9182

### Outdoor Hose Reel Cover

**Materials** Cover Fire Hose Reel UV and FR treated



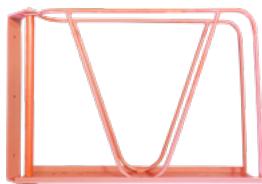
FS4002 and FS4004

### Pipe Mounted Hose Cradel and Cover

**Materials** Hot Dipped Galvanised Steel

**Finish** Cover: Powder Coated

**Note** Unit is designed to be supported by a 75mm pipe  
Holds a 30m hose layered into cradle



FS4054

### Swinging Arm Cradle

**Materials** Steel

**Finish** Powder Coated

**Note** Back arm swings enabling the cradle to be fitted into the cabinets



FR1242

### Adaptor Washers

**Materials** Neoprene or Leather

**Note** For all washer dimensions please refer to [MatthewsFireAlarm.com.au](http://MatthewsFireAlarm.com.au)



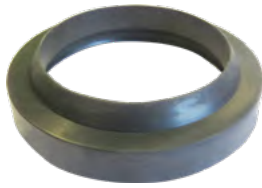
FR1233

### Jumper Valve Washers

**Materials** Neoprene

**Note** For all washer dimensions please refer to [MatthewsFireAlarm.com.au](http://MatthewsFireAlarm.com.au)





FR1229

### Miscellaneous Washers

<b>Materials</b>	Neoprene or Rubber
<b>Note</b>	65mm BIC



FS7053

### Pitot Gauge (Peizometer)

<b>Materials</b>	Chrome Plated
<b>Note</b>	Comes complete with case and liquid gauge A flow rate chart is also included with gauge




FS7020

### Hand Siren

<b>Materials</b>	Aluminium
------------------	-----------



 1800 777 299

 [matthewsfirealarm.com.au](http://matthewsfirealarm.com.au)

 [sales@mattfire.com.au](mailto:sales@mattfire.com.au)

27-28 Chapman Place,  
Eagle Farm QLD 4009, Australia



Matthews Fire Alarm is a division of  
Reliance Worldwide Corporation (Aust.) Pty. Ltd.  
ABN 71 004 784 301



## Contents

Fire Fighting

Terms and Conditions

Adaptors

Boosters

Breechings

Hydrant Valves

Standpipes

Miscellaneous

Terms and Conditions

Reliance Worldwide Corporation Matthews Fire Alarm Product Warranty

Conventry Adaptor

Reducing Adaptor

Copper to Roll Groove Adaptors

Storz Swivel Adaptors

Male to Male Adaptor

125mm Storz Roll Groove Adaptor

Ship to Shore Flange

Double Check Valve

Reduced Pressure Zone Valve

Back Entry Booster

Bottom Entry Booster

Single Point Booster

Storz Single Point Booster

38mm BSP Thread – 25mm Top Branchpipe

65mm BIC PVC Branchpipe

65mm QRT PVC Branchpipe

65mm QRT Brass Branchpipe

65mm BIC – 40mm BSP Top Branchpipe

Controlled Independent Ball Valve

Controlled Dividing QRT Breeching

Controlled Dividing Breeching

65mm QRT Serrated Tail Coupling

BSP Coupling

40mm BIC Coupling

65mm BIC Coupling

BIC x 65mm BSP Male Hydrant Valve

SART x 80 Roll Groove with Anti-Vandal Key

40mm BSP Hydrant Valve

65mm SART Hydrant Valve

65mm Globe Hydrant Valve

40mm BSP Jet Nozzle

Junior Fog Nozzle

40mm Commercial Fog Nozzle

FYRKYL – Multijet and Spray Nozzle

Plastic Diffuser Nozzle

Jet Nozzle

Jet Spray Nozzle

Double Outlet BIC Standpipe

Single Outlet Standpipe

Contractors Standpipe

BS 750 x BIC Standpipe | BS 750 x Contractors Standpipe

65mm QRT D/O Standpipe

Spare Part List (Standpipe)

Hydrant Valve and Chisel Point Spanner

Storz Folding Spanner

Fire Beater

RakHo

Firemans Hatchet

Pickhead Axe

Hose Washing Machine

Storz Static Pressure Gauge

Hydrant Road Key

Storz Spanner

Outdoor Hose Reel Cover

Pipe Mounted Hose Cradel and Cover

Swinging Arm Cradle

Adaptor Washers

Jumper Valve Washers

Miscellaneous Washers

Pitot Gauge (Peizometer)

Hand Siren