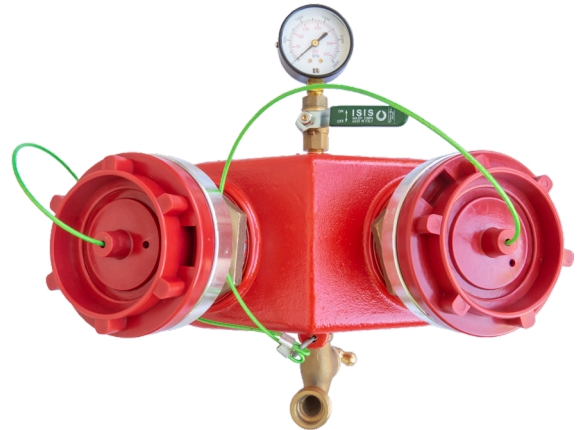


Storz Booster Back Entry

Scope of Use / Specification Sheet

Storz Boosters provide a point of attachment for fire brigades to provide additional water to a fire hydrant system in the event of an emergency. Storz Boosters are available in back entry or bottom entry.

Assembled, manufactured and tested in Brisbane, Australia.



FS1029

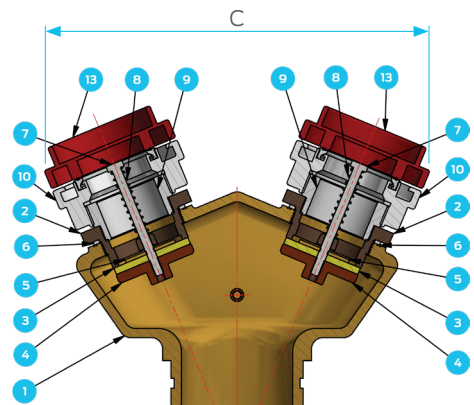
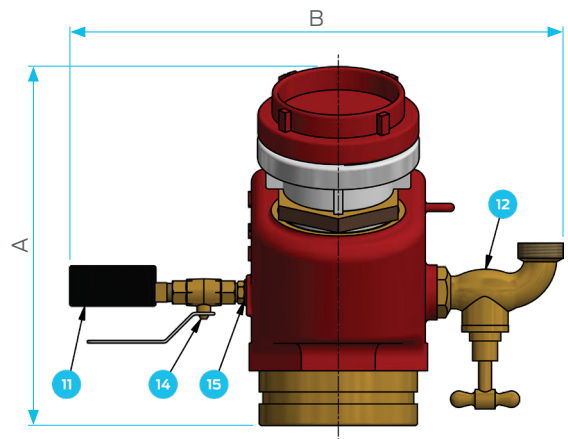
Parts List

Item	Qty	Part Number	Description
1	1	FR0439	Body Booster 100 RG Gunmetal Back Entry
2	2	FR0449	Booster Non-Return Valve Body Gunmental
3	2	FR1235	Washer Non-Return Leurethane
4	2	FR0450	Booster Non-Return Val/Seat Gunmental
5	2	FR0451	Booster Part Brass Washer
6	2	FR0445	Booster Back Entry Nylon Washer
7	2	FR0454	Bolt M8x100 Stainless Steel 316
8	2	FR0456	RG Booster Stainless Steel Springs
9	2	FR0435	16 TPIM - 65 BSP M Alloy Adaptor MFA
10	2	FS2016	Adaptor Storz 65-65 F/M
11	1	FR0460	Gauge Pressure 63mm x 2500kPa
12	1	FR1157	Hosecock 20mm
13	2	FS0526	Storz Blanking Cap - Plastic
14	1	47026-04DR	Ball Valve 1/4 Brass Mini M/F
15	1	01027-04	Hex Nipple R1/4" M

Dimensions

Model	A	B	C
FS1029	262	360	336

Note: All measurements in mm unless otherwise stated.



Standards and Approvals

All Boosters are manufactured and approved to AS 2419.3.