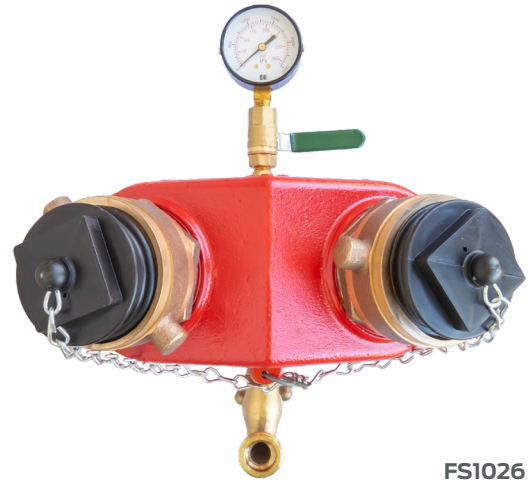


QRT Booster Back Entry

Scope of Use / Specification Sheet

QRT Boosters provide a point of attachment for fire brigades to provide additional water to a fire hydrant system in the event of an emergency. QRT Boosters are available in all thread types to suit each state requirement.

Assembled, manufactured and tested in Brisbane, Australia.



FS1026

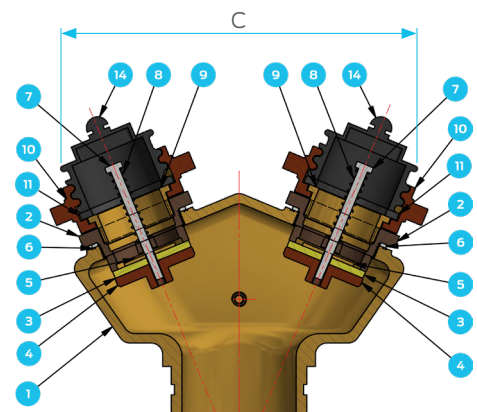
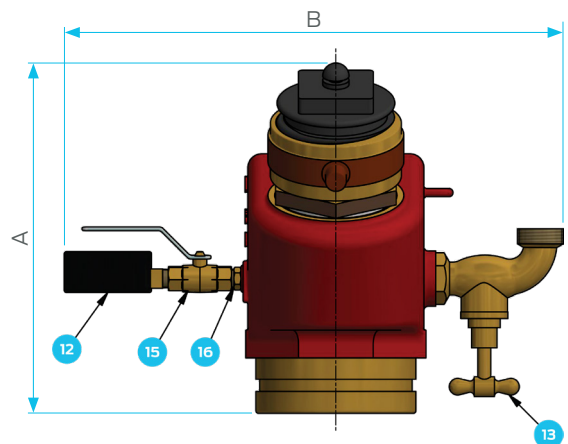
Parts List

Item	Qty	Part Number	Description
1	1	FR0439	Body Booster 100 RG Gunmetal Back Entry
2	2	FR0449	Booster Non-Return Valve Body Back Entry
3	2	FR1235	Washer Non-Return Leurethane
4	2	FR0450	Booster Non-Return Val/Seat Gunmetal
5	2	FR0451	Booster Part Brass Washer
6	2	FR0445	Booster Back Entry Nylon Washer
7	2	FR0454	Bolt M8x100 Stainless Steel 316
8	2	FR0456	RG Booster Stainless Steel Springs
9	2	FR0590	Short Tail 65mm
10	2	FR0587	65 QRT Ring Mach Gunmetal
11	2	FR1250	Washer 65 QRT Neoprene
12	1	FR0460	Gauge Pressure 63mm x 2500kPa
13	1	FR1157	Hosecock 20mm
14	2	FS2282	Plug 65 QRT Plastic Complete
15	1	47026-04DR	Ball Valve 1/4 Brass Mini M/F
16	1	01027-04	Hex Nipple R1/4" M

Dimensions

Model	A	B	C
FS1026	253	360	304

Note: All measurements in mm unless otherwise stated.



Standards and Approvals

All Boosters are manufactured and approved to AS 2419.3.